

Managing Multiple Subscriptions

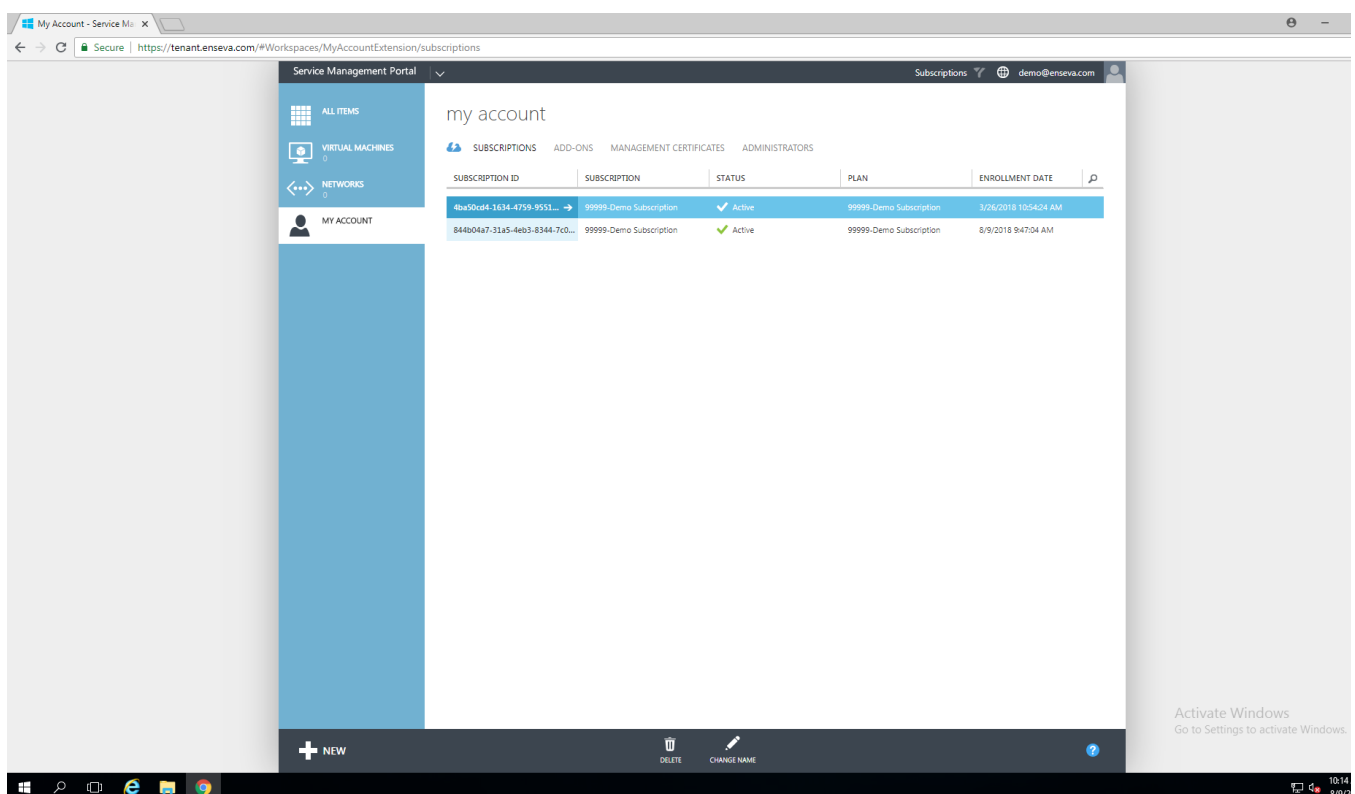
This guide will cover Managing Multiple Subscriptions within the Enseva Azure Portal

Managing Multiple Subscriptions

1. Navigate to the Enseva Azure Portal

It's possible for a user to own or have access to multiple subscriptions. This comes in handy in cases where separation is required between virtual machine instances and in cases of managed service providers having access to multiple client environments using a single pane of glass.

For the purposes of this tutorial, it is assumed that you have already logged into the Enseva Azure portal and multiple subscriptions have already been assigned to your account.



2. Select Plan To Review

Within the 'Subscriptions' page you will see the plans that are currently associated with your account, click on the 'Subscription ID' of the plan in which you would like to review.

My Account - Service Management Portal

Subscriptions demo@enseva.com

my account

SUBSCRIPTIONS ADD-ONS MANAGEMENT CERTIFICATES ADMINISTRATORS

SUBSCRIPTION ID	SUBSCRIPTION	STATUS	PLAN	ENROLLMENT DATE
4ba50cd4-1634-4759-9551-882dea65f6ab	99999-Demo Subscription	Active	99999-Demo Subscription	3/26/2018 10:54:24 AM
844b04a7-31a5-4eb3-8344-7cd...	99999-Demo Subscription	Active	99999-Demo Subscription	8/9/2018 9:47:04 AM

Activate Windows
Go to Settings to activate Windows.

My Account - Service Management Portal

Subscriptions demo@enseva.com

4ba50cd4-1634-4759-9551-882dea65f6ab

Virtual Machine Clouds

USED SUBSCRIPTION

0 CORES 0% of 4 CORES

0 MB 0% of 8192 MB

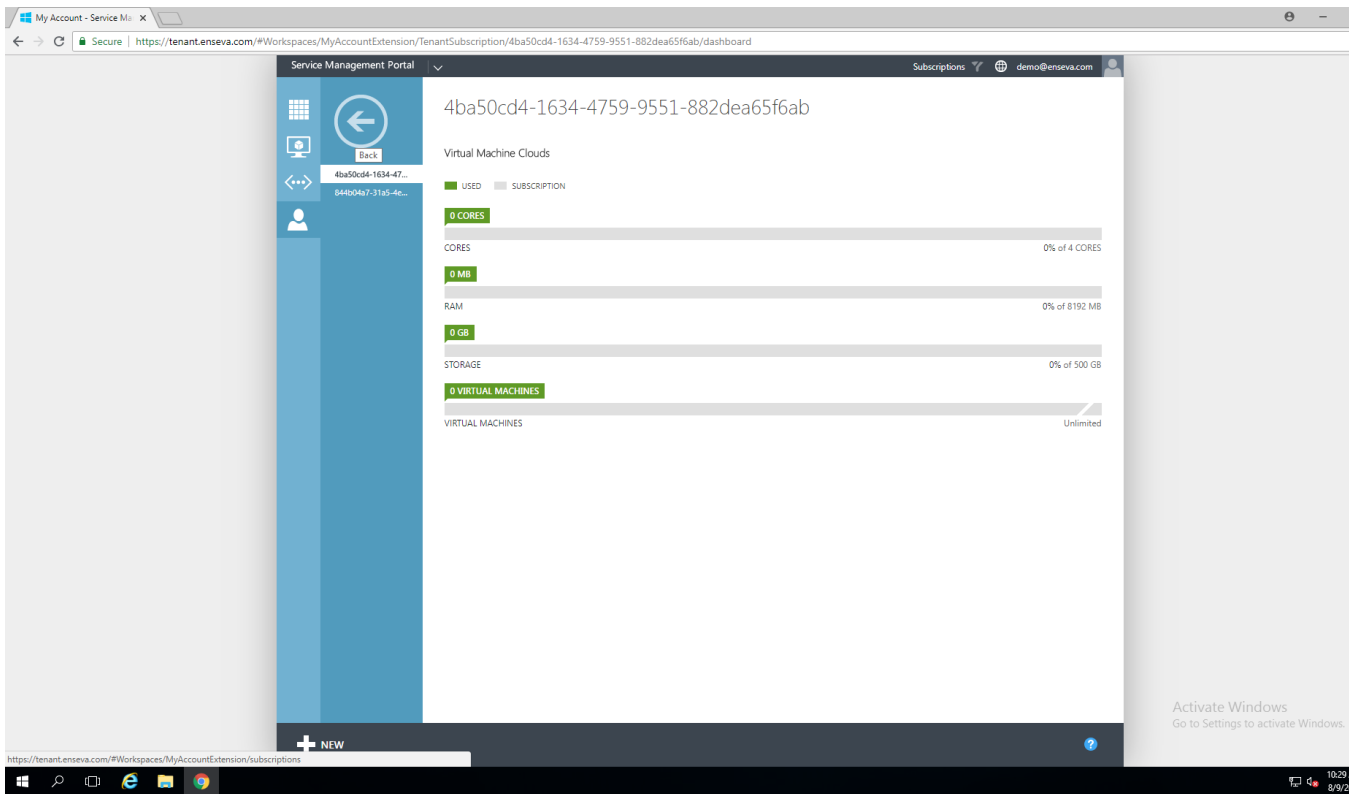
0 GB 0% of 500 GB

0 VIRTUAL MACHINES Unlimited

Activate Windows
Go to Settings to activate Windows.

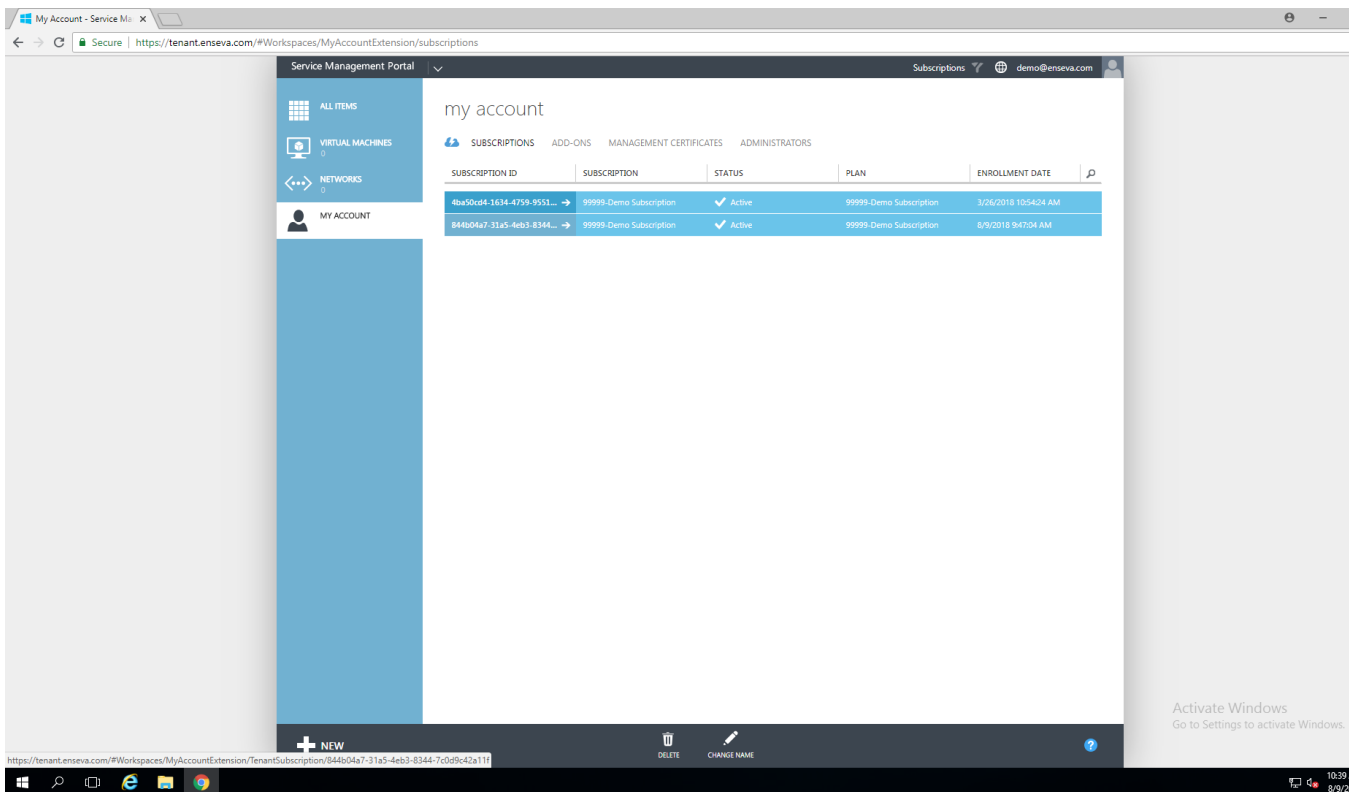
3. View an Alternate Subscription

If you would like to review a different subscription, click on the back button in the top left corner.



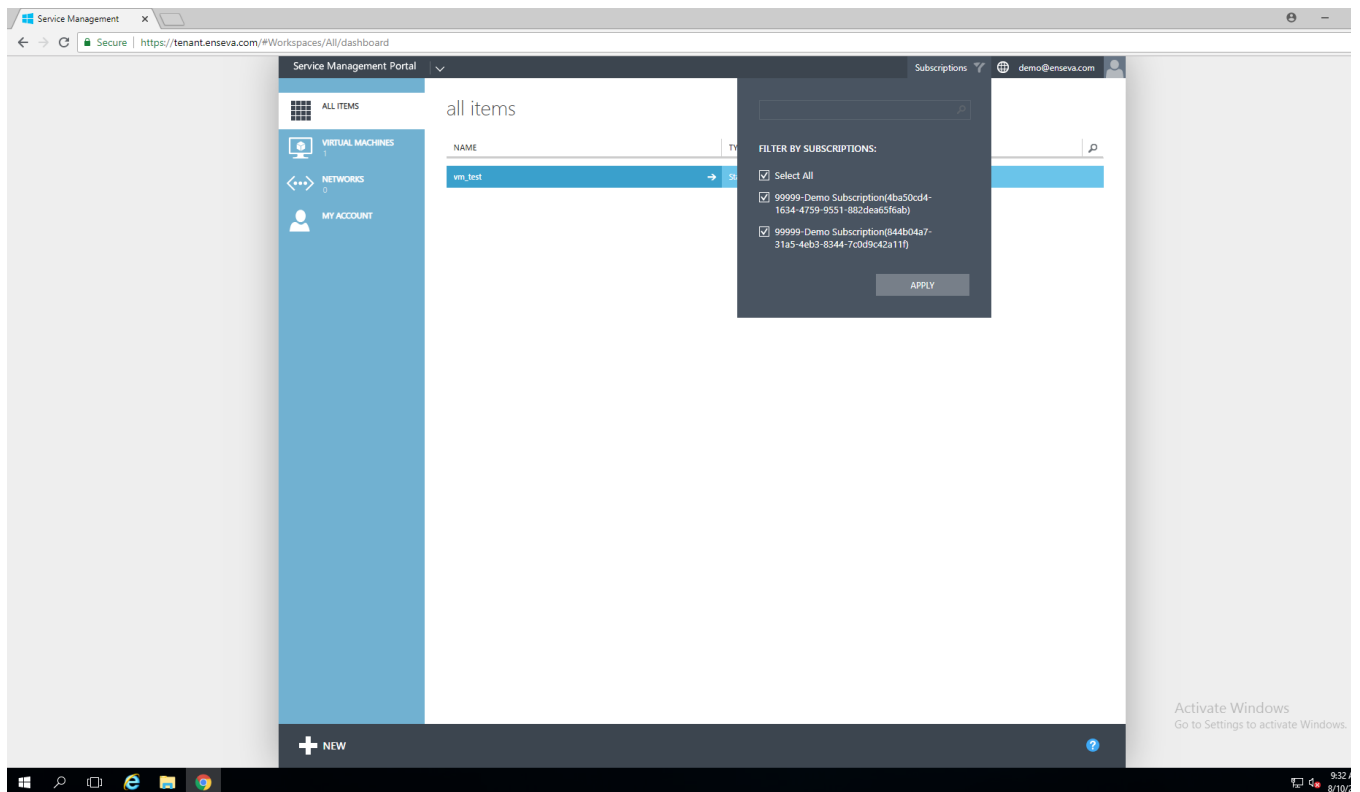
4. Select a Different Plan to Review

From the 'Subscriptions' page choose the next plan in which you would like to review.



5. Filter Subscriptions

It is also possible to filter which subscription you are currently interacting with. This can be done by clicking the 'Subscriptions' button towards the top of the page. Click the checkbox to the left of the subscription you would like to manage, then click 'Apply.'



Revision #2

Created 15 December 2023 07:13:24 by Admin

Updated 15 December 2023 12:22:52 by Admin